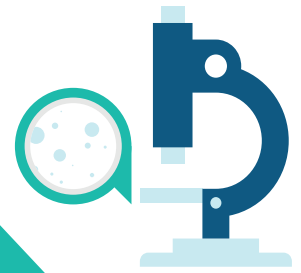


Melanoma Research Foundation Research Portfolio



The Melanoma Research Foundation (MRF) is the leading non-profit organization dedicated to eradicating melanoma by accelerating medical **RESEARCH**, while **EDUCATING** to and **ADVOCATING** for the melanoma community.



Funding Melanoma Research

The MRF provides emerging and established scientific investigators (from medical students to senior investigative teams) with highly sought-after, peer-reviewed grants across the disciplines of biology, immunology, prevention, diagnosis and treatment.

From 1998 to 2019, the MRF grant program has awarded 178 grants to investigators at all stages in their career paths, totaling over \$17 million.



TYPES OF GRANTS FUNDED:

TYPES OF GRANTS	PURPOSE	ELIGIBILITY	DURATION
MEDICAL STUDENT	Introduces students early in their careers to clinical/research opportunities under the mentorship of an investigator engaged in melanoma research	Medical students at an accredited U.S. medical school or institution	1 year
CAREER DEVELOPMENT	Enables young researchers to generate the groundwork that can leverage additional grant funding from other funding bodies	Junior investigators which include: <ul style="list-style-type: none"> • Postdoctoral fellows with less than five years of postdoctoral experience OR • A research associate, instructor, assistant professor or the equivalent 	2 years
ESTABLISHED INVESTIGATOR	Encourages proven researchers to continue research on emerging challenges in melanoma	Established researchers, mainly faculty with at least an associate professor appointment	2 years
TEAM	Encourages collaboration across academic disciplines in an institution or among multiple institutions	A PI and at least one co-PI, ideally from different institutions	2 years
CLINICAL TRIAL	Fosters clinical trials in the melanoma space	Junior through established investigators	2–3 years

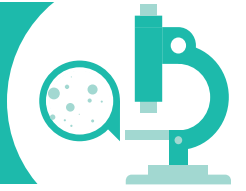
GRANT RECIPIENT

“ NIH-type funding mechanisms are not appropriate for the research proposed herein since it is the kind of research that is considered ‘risky’ by study sections. Only visionary funds like the MRF can overcome the vicious cycle of ‘no preliminary data that demonstrate the concept/no funding’ which we are all used to getting from the NIH review process. ”

GRANT RECIPIENT

“ This grant was the first one I was awarded after finishing my medical training, and tremendously helped establish my academic career. ”

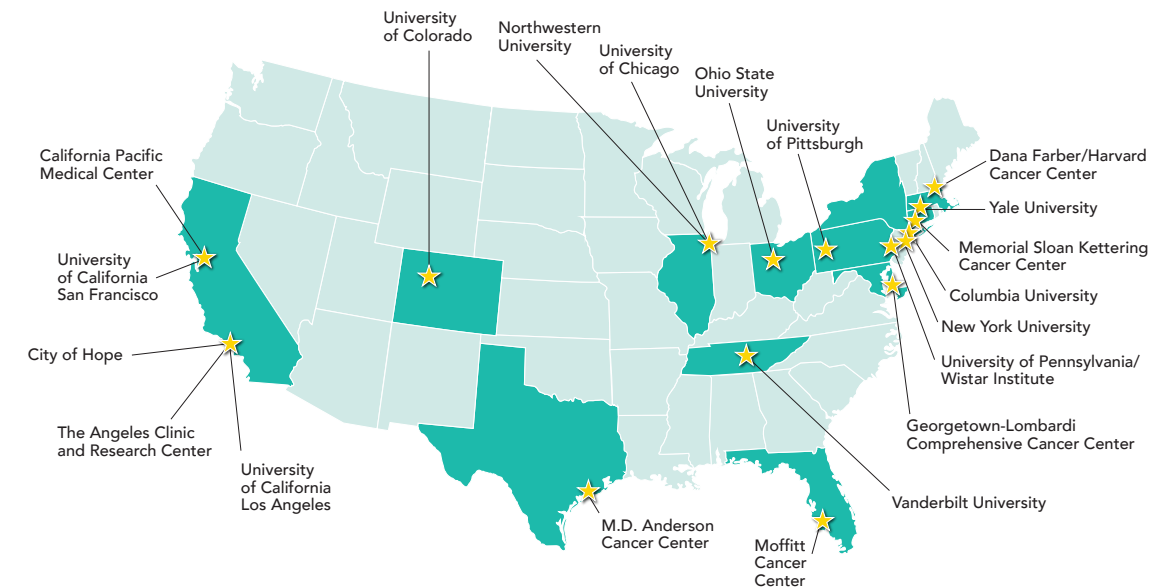
Scientific Initiatives



Creation of Resources

MRF BREAKTHROUGH CONSORTIUM (MRFC)

Recognizing a need for greater collaboration around translational research, the MRF formed the MRFC in 2010. The MRFC is a national network of 20 centers of excellence in melanoma that collaborate to accelerate drug development.



Virtual Repository

A Virtual Specimen Repository has been established with harmonized SOPs to ensure consistency across institutions and trials and over time.

focused on pediatric melanoma as well as mucosal melanoma. With respect to pediatric melanoma, the MRF sponsors an Annual Pediatric Summit each year so that families can come together and learn the latest in medical treatments and research, and find support. With respect to MM/ALM, the MRF is providing funding support for a biomarker trial for MM/ALM patients.

Rare Subtype Focus

Community United for Research and Education of Ocular Melanoma (CURE OM)

In 2011, the MRF launched CURE OM to focus solely on advancing the goals of the ocular melanoma community. To date, CURE OM has provided \$1.5 million in grants, held numerous scientific meetings, and is launching a patient registry while continuing to advocate for the ocular melanoma community and to try and improve the lives of the people impacted by this disease.

Pediatric and Mucosal/Acral Lentiginous Melanoma Initiatives

The MRF has also launched initiatives that focus on **pediatric** and **mucosal/acral lentiginous (MM/ALM) melanoma**. As such, the MRF is supporting grants

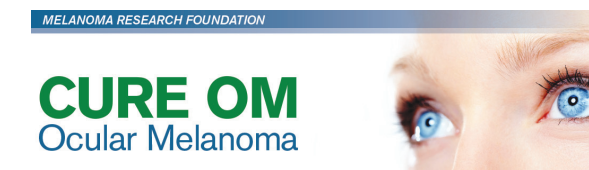
Support to the Field

- Partnership with SMR to sponsor annual investigator awards and satellite symposia
- Scientific meetings such as the Brain Metastases Summits 1.0 and 2.0 and the State of Melanoma

Further, due largely to patient suggestions, the MRF has developed a wide array of educational information, downloads for use in the office, links to clinical trials, buddy programs and online support groups. More information about the MRF, its programs, and its scientific leadership can be found at www.melanoma.org.

Patient Perspective

Incorporating a patient-centric approach to the grant review process, a patient review panel ensures that patient and caregiver priorities are reflected in the research funding process.



FUNDING FROM THE MRF HAS RESULTED IN:



181

PUBLICATIONS



346

PRESENTATIONS



5

PATENTS



15

CLINICAL TRIALS



62

GRANTS WITH NEW COLLABORATIONS



41

GRANTS WITH NEW FUNDING SUPPORT



57

MEDICAL STUDENT AWARDS



29

ESTABLISHED INVESTIGATOR AWARDS



83

CAREER DEVELOPMENT AWARDS



9

TEAM AWARDS

TO LEARN MORE,
VISIT [MELANOMA.ORG/RESEARCH-SCIENCE](https://www.melanoma.org/research-science)

MELANOMA RESEARCH FOUNDATION

[melanoma.org/research-science](https://www.melanoma.org/research-science)

202.347.9675 or 800.673.1290

